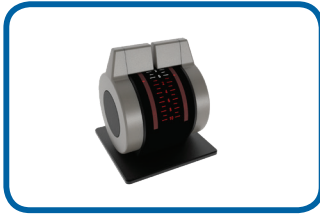
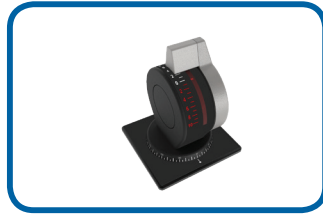


BUK-I product line

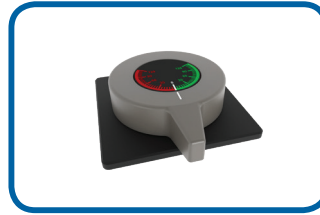
Introducing our new and complete product line: the BUK-I



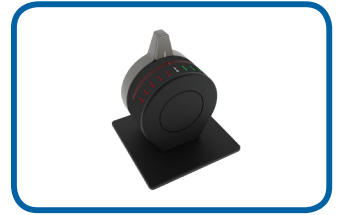
BUK-I propulsion



BUK-I azimuth propulsion



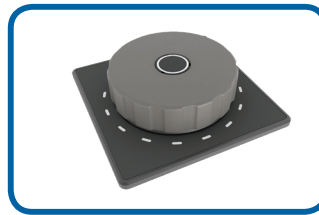
BUK-I steering



BUK-I bow thruster



BUK-I joystick



BUK-I multiwheel



BUK-I button panel

- Powder coated seawater resistant aluminum alloy, customizable in different colors
- Double and single speed lever
- Customizable detents
- Adjustable friction
- Illuminated LED dimmable dial
- Customizable dial
- Inbuild depth $\leq 60\text{mm}$
- IP56 tested
- Contactless sensor technology
- 4-20mA / CAN / Volt
- Standard with redundant output
- Executed with pluggable connectors
- Optional flying leads, terminated with AMP pins
- Plug & play, no scaling required

Type approved by

